

Founded 1642



New Hall School

Subject Information

S I X T H F O R M



September 2024 Entry



Introduction

Thinking about A Level choices and where you wish to study can be a very daunting process, especially since GCSEs are naturally your main focus over the coming months.

This booklet is designed to give you an idea of what the Sixth Form at New Hall offers. As well as your A Level courses, the core curriculum and academic enrichment programme, I very much hope that you will take full advantage of the exceptional range of co-curricular activities available at New Hall.

The Sixth Form experience is about expanding your horizons, both in your specialist areas of study and, more generally, in terms of your awareness of the world and your personal development.

In the Sixth Form, you will be encouraged to develop interests, assume responsibilities, and rise to the exciting challenges and opportunities on offer. In these, and your studies and pursuit of excellent qualifications, you are expected to aspire for excellence in all that you do. We aim to prepare you not just for university, college or an apprenticeship, but also for life and careers beyond it.

The opportunities here are wonderful; it is these experiences that will help to distinguish your application for post-18 study or work, and help to shape your future.

Life in the Sixth Form will also be demanding since the privileges and opportunities you have, for example, for independent learning, come with certain duties and responsibilities. Expectations regarding behaviour are high and are based on respect for all. You will be required to show significant levels of motivation and we expect that you will be fully involved in School life, as a leader and as a role model for the student community, and as ambassadors for New Hall School.

I hope that you will also take a full part in the spiritual life of the School and make a significant contribution to the ethos, incorporating the values that lie at the heart of a New Hall education in all areas of your School life.



Mrs K Jeffrey
PRINCIPAL



Life in the Sixth Form

There are many features that make the Sixth Form experience at New Hall distinctive. With a wide range of A Level subjects on offer, including some which are only offered in the Sixth Form, you will be able to nurture your talents and extend your understanding of the subjects that interest you the most.

Tutor groups and classes are smaller in the Sixth Form and are mixed in ability, age (with a mixture of Year 12 and Year 13 students) and gender. A Level lessons are taught by experienced specialists who provide a more adult approach to learning and teaching, and you will have access to a range of excellent facilities in the Sixth Form Centre. We warmly welcome a number of new students to New Hall, and you are encouraged to grasp the opportunity to forge new friendships and broaden your social circles. You will be assigned a tutor who, as a Sixth Form specialist, will oversee your academic and pastoral progress and help to guide you through the UCAS process. Boarders and those who take up the opportunity to flexi-board will benefit from the support of the Head of Dennett or Campion House and the residential staff team.



Although the academic studies become more focused in the Sixth Form, we offer a broad range of opportunities for you to develop your interests and skills beyond the classroom. You will benefit from a diverse core curriculum, which includes our Horizons programme, Physical Education, and a comprehensive PSHEE course which aims to empower students to make healthy, informed decisions in response to the challenges and opportunities of modern life. Undertaking the Extended Project Qualification will allow you to pursue your own special interests while developing independent research skills and boosting your academic profile. Life in the Sixth Form provides opportunities for you to serve others and to develop your leadership, teamwork and communication skills. Sixth Form students play a pivotal role in the important work of the New Hall Voluntary Service, and student leaders are selected from the Sixth Form. As a senior member of one of our six vertical Houses, you will act as a role-model for younger students by leading House events, demonstrating pride and commitment, and instilling this in others. Sixth Form students enjoy a rich and varied programme of co-curricular activities, assuming lead roles in groups such as Corpus, the Feminist Society, the Theology Society and the Eco Council, to name but a few. The activities on offer provide numerous opportunities for you to develop your confidence and skills in ways which will prepare you for life beyond School.

You will benefit from a specialist university preparation programme to help you to make informed decisions on your next steps. This includes access to tailored advice and preparation for those aiming for some of the highly competitive university courses on offer. We have an enviable record of success in applications for Russell Group Universities, Oxbridge, Medicine, Dentistry, Veterinary Science and American universities. Recent Oxbridge success including offers in Theology & Religion, History, Law, Spanish, Biological Sciences, Music, Medicine, Classics, Mathematics, PPE, Engineering and Economics.

Our dedicated Head of Careers, Mrs Hilliker, is available to give personalised individual advice for all students to help them prepare for the next stage of their lives.

The A Level years require hard work and dedication, but they bring tremendous academic and personal fulfilment. I look forward to welcoming many of you next September as you embark upon the exciting next phase of your educational journey at New Hall.

Mrs N Andrews
HEAD OF SIXTH FORM

Academic Matters

ENTRY REQUIREMENTS

Students in the Sixth Form will typically study three subjects at A Level (or four if they choose to study Further Mathematics) to be examined at the end of the two years in the Sixth Form. With national changes to A Levels a few years ago, both in terms of subject content and their linear structure, these qualifications have typically become more challenging than the previous model. In response to this, we increased subject contact time with teachers and the academic focus is now typically upon three rather than four subjects. Many students will also choose to undertake an Extended Project Qualification, which is recognised, valued and encouraged by many universities.

Every student who is made an offer of a place in Year 12 will need to evidence an academic profile of at least three Grade 7s and two Grade 6s at GCSE (or equivalent). For the purpose of our Sixth Form entry requirement, a Grade 7 is equivalent to Grade A, and Grade 6 is equivalent to Grade B in IGCSEs. In addition to this broad academic profile, students are required to meet the minimum entry criteria for each subject they wish to pursue. These specific entry criteria are a minimum and are provided so as to help find a suitable fit of subject combinations. Information about these is contained in the relevant subject specific page in the second half of this booklet. For new subjects offered only at A Level and which will be studied ab initio, such as Politics and Psychology, we will consider relevant GCSEs. For external students, any Sixth Form offer of a place will be dependent on interview, personal statement, a copy of the student's most recent school report and a reference from the student's current Headteacher, in addition to meeting the minimum entry criteria. We expect all students to show high levels of effort and application to their studies during their GCSE courses (or equivalent) and be able to demonstrate their commitment to high standards of conduct.

Progression from Year 12 into Year 13 should take place automatically for nearly all students. If though, a Year 12 student were to receive a formal warnings relating to their attitude to learning, then entrance into Year 13 may be conditional on a significant improvement in their attitude and/or the student's academic attainment in Year 12, or they may not be allowed to progress into Year 13. The Attitude to Learning monitoring system provides an effective means by which to make an accurate evaluation.

A LEVEL COURSE STRUCTURE

Subject	Lessons (55 minutes per lesson)
A Level subjects	5-6 lessons per subject per week
IELTS (if applicable, for EAL students)	3 lessons per week
Physical Education/Games	1 afternoon per week
Trinity Public Speaking Skills* (optional)	1 lesson per week
Horizons	1 lesson per week
Extended Project Qualification	1 lesson per week (this becomes optional after October in Year 12)
DELTA/DELE Language Diploma	2 lessons per week
PSHEE	1 lesson per week

If English is not your first language, you will be expected to attend EAL lessons until you have achieved an IELTS score of at least 6.5. Usually you will be expected to study three subjects at A Level in addition to EAL and an A Level in your native language.

Academic Matters

The subjects available at A Level currently include:

Fine Art Biology Business Chemistry Classical Greek (if sufficient demand) Computer Science Drama & Theatre Studies Economics English Literature French Geography	History Latin Mathematics and Further Mathematics Music Photography Physical Education Physics Politics Psychology Spanish Theology
---	---

INDEPENDENT LEARNING

In addition to your A Level lessons, you will be expected to spend at least 5 hours per subject per week on study outside lesson time. In order to help support you with this, you have dedicated study areas in the Thomas More Sixth Form Centre (and study bedrooms for boarders). The Library and other classrooms are also available when lessons are not taking place. Developing study and independent learning skills is a key part of a successful Sixth Form experience and this is consolidated within the tutorial programme. Mentoring is available to students with individual learning needs.

Students have access to the Tait Library throughout the School day. Boarders can arrange access in the evenings until 9.45pm. Loan limits are very generous. Library resources include computers, a photocopier, national and local newspapers and specialist periodicals. The School Librarian is available to assist you in finding, accessing and using information, for example in researching your Extended Project. You are strongly encouraged to discuss your information needs with her.

In order to enhance your academic progress and develop your understanding of the wider world, we recommend wider reading. This will help you develop your analytical skills and make links between your academic studies and issues that are current in society. We recommend:

- Daily reading of a quality newspaper
- Weekly reading of a news journal (e.g. The Economist or The Tablet)
- Regular reading of quality novels
- Reading of subject specialist journals (e.g. New Scientist)

Choosing Your Subjects

There are four key questions I would invite you to consider as you make your A Level subject choices. These are:

Do you have a chosen career? If so, you need to be sure that the subjects you have chosen, both individually and in combination with each other, fulfil the university and/or career requirements for the course or direction of your choice. A summary of key requirements is given and you are encouraged to seek advice from your Tutor, however there are other staff available for guidance.

Which subjects are your strongest? University and apprenticeship offers will typically be made on condition that you achieve certain grades in three A Levels. You therefore need to choose subjects in which your chances of achieving the best possible results are increased.

Which subjects do you enjoy? Academic success comes from interest and enjoyment as well as ability. It is important to select subjects that suit your aptitude and interests, rather than those which you deem to be 'best', based on other people's recommendations.

How suited to the demands of the course am I? You should read the individual entry criteria for each subject, as listed in the second half of this booklet. If you think you may struggle to meet one or more of the specific entry criteria, then this would certainly suggest that you should be cautious about picking it. Essentially, both the general and the subject specific entry criteria are there to help make choices that are in your best academic interests.

SUBJECT CHOICES

In the Lent Term of Year 11, you have the opportunity to discuss your A Level subject choices with subject teachers, your Head of Year and senior staff. It is important to consider which combinations of subjects are suitable and how these support career ideas you may have. You should also discuss choices with your Tutor and relevant Curriculum Leaders, since the difference in content and approach between GCSE and A Level can often be significant. Please select three subjects, with those opting for Further Mathematics choosing this as a fourth subject.

For students joining New Hall at Sixth Form, we will discuss your subject choices with you as part of your application process.

We do our best to construct a timetable that enables as many students' first choices as possible, but we cannot always guarantee to do this in every single case. Please, therefore, also consider having a back-up subject in mind just in case we are unable to guarantee your original combination of subject choices.

Please note that you can broaden and enrich your academic learning by taking one of the diplomas on offer in French or Spanish, or by taking the Extended Project Qualification.

After you receive your GCSE results, you may wish to change your choice of A Level subjects; notification of this should be made directly to the Admissions Department and Mrs Andrews as soon as possible. Although there is some flexibility in the system, it cannot be guaranteed that changes can be accommodated and any such change must meet the minimum entry criteria for that subject. It is important to consider that your performance throughout the GCSE course is usually a better indication of your true ability than an 'unexpected' result. If you have enjoyed a subject at GCSE and have done well throughout Year 11, the chances are you will continue to do so at A Level, whatever your examination result. Similarly, if you have not fully enjoyed a subject, and have not been achieving particular success during the course, then a surprisingly good GCSE result is not necessarily a reason to select it at A Level course. It is a good idea to discuss any changes with your teachers.

EXAMINATION BOARD CONTACT DETAILS

All A Levels offered at New Hall follow the specification from one of the following examination boards. Specification details can be downloaded from the following websites:

www.aqa.org.uk
www.edexcel.com
www.ocr.org.uk

www.wjec.co.uk
www.cie.org.uk
www.educas.co.uk

Scholarships

We are delighted to offer a number of scholarships. There is a scholarship application form, and please note that all scholarships are awarded at the discretion of the Principal and are dependent on the candidate meeting all of the criteria, including a sufficiently high standard academically, behaviourally and in terms of attitude to learning.

Sixth Form GCSE Achievement Scholarship (internal & external candidates)

Following publication of GCSE results in August, this may be awarded to up to four Year 12 internal candidates and up to four Year 12 external candidates with the highest GCSE results, subject to a minimum of eight grade 8s and an exemplary attitude to learning. This scholarship has a financial contribution of £5,000-£10,000pa, subject to funding. If a student is successful in achieving this scholarship, it may replace any existing awards.

Sixth Form Academic Scholarship (internal and external candidates)

Academic Scholarships may be awarded following the results of the mocks and/or predicted GCSE grades. The Academic Scholarship will be subject to a minimum of eight grade 8s at GCSE.

Sixth Form STEM Scholarship (internal or external candidates)

We offer up to two STEM (Science, Technology, Engineering & Mathematics) Scholarships, subject to the candidate achieving a minimum of a Grade 8 in two STEM subjects, plus seven grade 7s being achieved at the publication of GCSE results in August, and an exemplary attitude to learning. To be eligible for a STEM Scholarship, a student must also be taking at least two subjects from the following list, in both Year 12 and Year 13: Biology, Chemistry, Computer Science, Economics, Mathematics, Physics, and Psychology.

Sixth Form Modern Languages Scholarships (internal or external candidates)

French Scholarships and Spanish Scholarships may be awarded, subject to the candidate achieving a minimum of a Grade 8 in French and/or Spanish, plus five grade 7s being achieved at the publication of GCSE results in August. To be eligible, a student must be taking French and/or Spanish at A Level. Priority may be given to students studying two languages. For external candidates, these Scholarships are awarded in the Lent Term preceding entry and are based on a completed application form (available from the Admissions Department), an interview, GCSE mock results and/or supporting school report and/or entrance examinations. For internal candidates, the Scholarship is based on recommendation from the Head of Department and GCSE mock examination/GCSE final examination results.

Sixth Form Classical Languages Scholarships (internal or external candidates)

Latin Scholarships and Classical Greek Scholarships may be awarded, subject to the candidate achieving a minimum of a Grade 8 in Latin and/or Greek plus five grade 7s being achieved at the publication of GCSE results in August. To be eligible, a student must be taking Latin and/or Classical Greek at A Level. Priority may be given to students studying two languages. For external candidates, these Scholarships are awarded in the Lent Term preceding entry and are based on a completed application form (available from the Admissions Department), an interview, GCSE mock results and/or supporting school report and/or entrance examinations. For internal candidates, the Scholarship is based on recommendation from the Head of Department and GCSE mock examination/GCSE final examination results.

Sixth Form Diocesan Scholarship (external candidates)

The successful applicant will be expected to make a significant contribution to Chaplaincy and the liturgical life of the School and be a practising Roman Catholic. The recipient is likely to be in the top quartile academically. The scholarship may be awarded for any of the four main scholarship categories at Sixth Form i.e. Academic, All-Rounder, Music or Sport. Candidates interested in applying for this will need to provide a copy of their baptismal and first Holy Communion certificates and complete the priest reference form.

Sixth Form All-Rounder Scholarship (external candidates)

This award is to a student who is likely to contribute exceptionally to the overall life of the Sixth Form. The

Scholarships

recipient is likely to be academically strong, and be able to make an outstanding contribution to the co-curricular life of the School. These scholarships are awarded in the Lent Term preceding entry and are based on a completed application form (available from the Admissions Department), an interview, GCSE mock results and/or supporting school report and/or entrance examinations.

Sixth Form Fardell Music Scholarship (internal or external candidates)

The highest performing candidate may be awarded the Sixth Form Fardell Music Scholarship, awarded subject to achieving a minimum of a Grade 8 in GCSE Music at the publication of GCSE results in August. The Sixth Form Fardell Music Scholar will be expected to take A Level Music, take leading roles in School ensembles and liturgies, and perform at concerts and other public events, as required by the Director of Music.

This scholarship includes two sets of tuition fees per week for instruments/voice. The School looks for evidence of future potential as well as current achievements. Candidates will be assessed for the Scholarship by the Director of Music. Should a student stop playing the relevant instrument/not take A Level Music, then the award will cease from the following term.

Sixth Form Sport Scholarship (internal or external candidates)

The highest performing candidate may be awarded the Sixth Form Sport Scholarship. The Sport Scholar is expected to represent the School at sporting events, as required by the Director of Sport.

Proven sporting ability/interests will be the basis for selection, as well as potential. Priority will be given to candidates who excel in at least two of our curricular or co-curricular sports (athletics, cricket, equestrian, football, golf, hockey, netball, rugby, skiing, swimming and tennis). In the event that a student excels in only one particular sport, a scholarship may still be awarded. Candidates will be assessed for the scholarship by the Director of Sport at the time of the entrance examinations. Evidence of the student's achievements, including a testimonial from their coach, will need to be provided before assessment takes place. Should a student stop playing the relevant sport, then the award may cease from the following term.

Outstanding Performer Award (Sport) (internal or external)

At the Principal's discretion, an Outstanding Performer Award (Sport) may be offered to a student who has demonstrated exceptional achievement and who represents their country at U16 level or above in a sport for which the School has a team. The Outstanding Performer Award (Sport) will be expected to represent the School at sporting events as required by the Director of Sport.

Outstanding Performer Award (Music) (internal or external)

At the Principal's discretion, an Outstanding Performer Award (Music) may be offered to a student who has demonstrated exceptional prior achievement (conservatoire level performance) and has the potential to perform at national and international level. In addition to a monetary award, this scholarship includes two sets of tuition fees per week for instruments/voice. Candidates will be assessed for the scholarship by the Director of Music. The Outstanding Performer Award (Music) will be expected to take a leading role in School ensemble activities, and to perform at concerts and other public events, as required by the Director of Music.

The following scholarships may already be held by New Hall Year 11 students, and may continue into Sixth Form, subject to the student's eligibility:

- Hawley Academic Scholarship
- Dennett All-Rounder Scholarship
- St Augustine Scholarship
- Dolman Scholarship
- Diocesan Scholarship

Core Curriculum

HORIZONS

All students in the Sixth Form receive core Religious Education through the Horizons programme which is a central part of Catholic Sixth Form education. Throughout the course, students are offered the opportunity to reflect critically on past and present influences that shape life and culture today. Horizons offers the space to explore, question, evaluate, gain knowledge, and apply their own beliefs, while respecting the beliefs of others. A central aspect of this is a culture of dialogue.

The aims of this programme are:

- To enable students continually to deepen their religious and theological understanding and be able to communicate this effectively
- To present an authentic vision of the Church's moral and social teaching so that students can make a critique of underlying trends in contemporary culture and society
- To give students an understanding of other religions and worldviews and to help them become skilled intercultural navigators
- To develop the critical faculties, to bring clarity to the relationship between faith and life, and between faith and culture
- To stimulate students' imagination and provoke a desire for personal meaning
- To enable students to relate the knowledge gained through religious education to their understanding of other subjects in the curriculum

Through Horizons, our students become religiously literate, engaged young people, with the knowledge, understanding and skills to reflect spiritually, and think ethically and theologically.

PUBLIC SPEAKING AND COMMUNICATION SKILLS EXAMINATIONS

New Hall School has a long tradition of preparing and entering students for public examinations in Speaking in Public, Verse and Prose, Acting Skills and Musical Theatre.

Similar to LAMDA, we offer Trinity College training and examinations. In 2023, we became a Trinity Champion Centre. Through this training, students strengthen their ability to think creatively, prepare collaboratively and present the ideas you wish to communicate with clarity and authority.

Students choosing to enter examinations present their work to highly qualified and friendly examiners and receive expert feedback. The higher grades (from Grade 6 to Grade 8) are within the national Qualifications and Credit Framework, meaning that students can gain UCAS points through their results. For example, under the current UCAS tariff (2017) a Distinction at Grade 8 in the above examinations is equivalent to 30 UCAS points.

Core Curriculum

PERSONAL SOCIAL HEALTH AND ECONOMIC EDUCATION (PSHEE)

The PSHEE programme in the Sixth Form runs over two years, aiming to help our students to develop the knowledge, skills and attributes they need to thrive as individuals, family members and members of society. The PSHEE programme looks to help students to manage many of the most critical opportunities, challenges and responsibilities they will face in the future. It is delivered primarily through a weekly lesson with Tutors. Students are also encouraged to think about themselves and their future within the context of the wider community. Topics include mental health and emotional wellbeing, managing risk and personal safety, financial choices, consent, and forming and maintaining respectful relationships.

SENIOR GAMES & SCHOOL SPORT

All students are expected to participate in physical exercise on a regular basis every week. This involves the majority of our Sixth Form students contributing to the major sporting teams in a given term. In addition, we offer a variety of different sports during the year.

MAJOR SPORTS

Term	Sports
Michaelmas	Rugby, Hockey
Lent	Rugby Sevens, Hockey, Netball
Trinity	Athletics, Cricket, Tennis

ADDITIONAL SPORTS

Swimming, Dance, Table Tennis, Badminton, Football, Fitness (CV, Weights), Skiing, Equestrian, Basketball, Golf

There are opportunities and expectations for our Senior students to compete in School teams and to be seen as role models to the younger students in the School. The most able students also compete at National and County levels. The sports listed as 'Additional' above may on occasion be subject to change.

Life Outside the Classroom

There is so much more to Sixth Form life than examination grades. Sixth Form at New Hall provides a vast array of opportunities to enhance your personal development; a key part of which is our outstanding co-curricular programme. Some of the skills and qualities you can develop through active involvement in the co-curricular life of the School can have a considerable impact on academic attainment.

It is very important for all students to continue to develop their interests and skills by making the most of the wide range of co-curricular opportunities, including sport, outstanding performing arts including Dance, Drama and Music, all manner of clubs from Astronomy to Model United Nations and even Formula One in Schools, and the very popular New Hall Politics Question Time Debate. Many students join our academic societies, some of which link directly to A Level subjects. This enables them to strengthen their studies in that subject or access subjects beyond their core three A Levels. Committing to a broad and balanced education will enable you to develop a wealth of skills complementary to your academic studies. Some of the further opportunities are explained in greater detail below:

NEW HALL VOLUNTARY SERVICE (NHVS)

As Year 12 students, you will have the opportunity to be leaders of the many NHVS groups that are available. In the second half of Michaelmas Term, you will be invited to apply for positions of responsibility. Those who are appointed to these positions are expected to show superb leadership, organisational and motivational skills, and be a role model for the younger students. The work of NHVS is recognised as being of great value both within School and more broadly: NHVS has won a number of local and national awards.

THE DUKE OF EDINBURGH'S AWARD SCHEME

Many of you will have already completed your Bronze and/or Silver Duke of Edinburgh's Award. As you move into the Sixth Form, there will be continued opportunities to progress by undertaking the Gold Award. If you are new to The Duke of Edinburgh's Award Scheme, and have not completed Bronze or Silver, you can undertake Gold by direct entry. Participation in The Duke of Edinburgh's Award scheme is widely recognised and highly regarded by universities and employers as it requires maturity, responsibility and commitment to complete successfully. Further details about The Duke of Edinburgh's Award in the Sixth Form will be shared in the Michaelmas Term.

LEADERSHIP OPPORTUNITIES

A key feature of Sixth Form life is the opportunity to undertake leadership roles in a number of areas. The most high-profile are the Senior Prefect positions, such as Head Girl and Head Boy. The selection process occurs in the Lent Term and mirrors that of a job application, offering all students the opportunity to apply for a variety of roles and be assessed for them. The process is rigorous and challenging, and will by its nature help to develop resilience.

WILLOW

A key element in the School's peer mentoring scheme, Sixth Form students work in small teams regularly supporting students in Years 7-9. It allows not only direct connection between our senior and more junior students, but also serves to encourage an alternative source of support. It requires reliability, communication and listening skills, and develops a sense of responsibility and leadership in our Sixth Form students.

CASUAL EMPLOYMENT

At New Hall, we also greatly value the importance of enhancing students' skills and providing opportunities for paid work. Subject to selection via application process, many current and former students have found casual employment at the School as qualified lifeguards, sports coaches and support staff in various roles, including at our many holiday camps.

CORPUS

This is a student group designed to discuss and celebrate racial equality. It provides an opportunity for students to come together to address issues of racial inequality and to learn about other cultures. Members of Corpus are vehicles for change and are often seen to be the driving force behind whole school initiatives that seek to eradicate racial injustice.

Most Able & Talented Students

There are numerous enrichment and extension opportunities to help you reach your full potential. Listed below are some of them.

Provision for **Most Able & Talented** students is a key priority of New Hall's Sixth Form. Each department has its own Most Able and Talented coordinator who ensures that stretch and challenge is promoted across all areas of the curriculum. The New Hall Learning Habits are embedded across the curriculum and have been particularly beneficial to our most able students in fostering resilience, thinking skills and intellectual courage. New Hall has a strong record of recognising and supporting students who display achievements in all areas of School life. Each year new clubs and initiatives are introduced.

The **Extended Project Qualification**: The Extended Project Qualification is available to all students and is strongly recommended to those applying to the most competitive universities. Miss Beatty oversees this.

The **English Department** has an initiative called **QUERCUS (Oak tree)** which extends the most able in English Literature and prepares them for Literature at university.

Public Speaking Skills lessons and examinations are available to develop public speaking and individual acting skills.

The **House** system, the **Prefect** system, the **NHVS Programme**, and **The Duke of Edinburgh's Award Programme** all nurture leadership skills.

The **Politics Department** oversees **Model United Nations** which is ideal for those who are keen to develop their knowledge and understanding of Politics, History, Economics and Geography. The Department also runs a regular Question Time debate.

The **History Department** runs a **History Society**, led by Mrs Garside.

The **Biology Department** runs the **Biology Society** and the **MDV (Medicine, Dentistry, Veterinary Medicine) Society**. Students meet regularly to develop their knowledge and discuss recent scientific advances and issues. All Years 12 & 13 Biology students are entered into the Biology Olympiad.

Dr Thomas runs an **Astronomy** club. There is also a **Chemistry Olympiad** and a **Physics Olympiad** problem-solving club.

The **Music Department** offers outstanding musical opportunities through its wide range of ensembles, from choirs, orchestras and chamber music to bands, Jazz Initiative and so much more, concerts, recitals, live lounge, workshops and masterclasses.

The Drama Department produces a number of performances during the academic year, from specialist smaller scale performances to major fully staged productions of plays and musicals. Recent performances have included fully stage performances of *We Will Rock You*, *Shakespeare in Love* and *Oliver*. The **Drama Department** also fosters and encourages students to put on self-directed plays and students are also invited to take on directorial or technical responsibilities with the lower School production and **Year 7 Drama Club**.

The **Theology Department** runs a weekly **Theology Society** which enables students to debate a range of contemporary issues pertaining to religion, philosophy and ethics.

The **Classics Department** runs Advance Classics sessions and a meeting of the **Classics Society** each week.

Mathematics students have the opportunity to enter the **UKMT Individual and Team Mathematics Challenges**. Our most outstanding mathematicians can progress to the Olympiad stage of the individual competition.

Boarding in the Sixth Form

Boarding in the Sixth Form provides an opportunity to have more independence in your academic and day-to-day life. It provides an important stepping stone between home and university life.

WHEN AND WHERE?

The boarding choice in the Sixth Form at New Hall is fully flexible, with options from one night per week to full boarding. Sixth Form boarders reside in one of our Senior Boarding Houses; Dennett House for girls and Campion House for boys. Sixth Form boarders have an individual bedroom, equipped for private study. House facilities include: Common Rooms with digital & Sky television, kitchen, computers and gaming consoles, and wireless internet. Boarders are able to take advantage of New Hall's superb facilities in the evening, including the Library, and access to outstanding Performing Arts and Sports facilities. Boarding can be particularly beneficial to students who have a significant involvement in the wider co-curricular life of the School.

RESPONSIBILITY

Of course, with greater independence comes greater responsibility. In addition to ensuring studies are completed on time, this may also include elements of university and adult life such as cooking and cleaning, washing clothes, making your own travel arrangements and having greater responsibility for your own money. Many students find it helpful to learn the skills of independence gradually, in a supportive atmosphere, such as that on offer through boarding at New Hall.

ORGANISING YOUR TIME

Sixth Form boarders are taught to organise their time in a supportive environment. Each evening during the week there is a time when everyone will be studying. However, you will need to supplement this at other times during the week. Your House staff team will be there to advise you on how to achieve an appropriate balance of work and play. For those staying at weekends, there are many activities and trips on offer and it will be your responsibility to schedule study time to ensure you are meeting the demands of your studies.

ACTIVITIES

Boarding gives you the opportunity to lead and to be involved in a wider range of activities with your peer group. Trips for Sixth Form boarders are often organised to cultural and sporting events alongside team-building activities such as paintballing or go-karting.

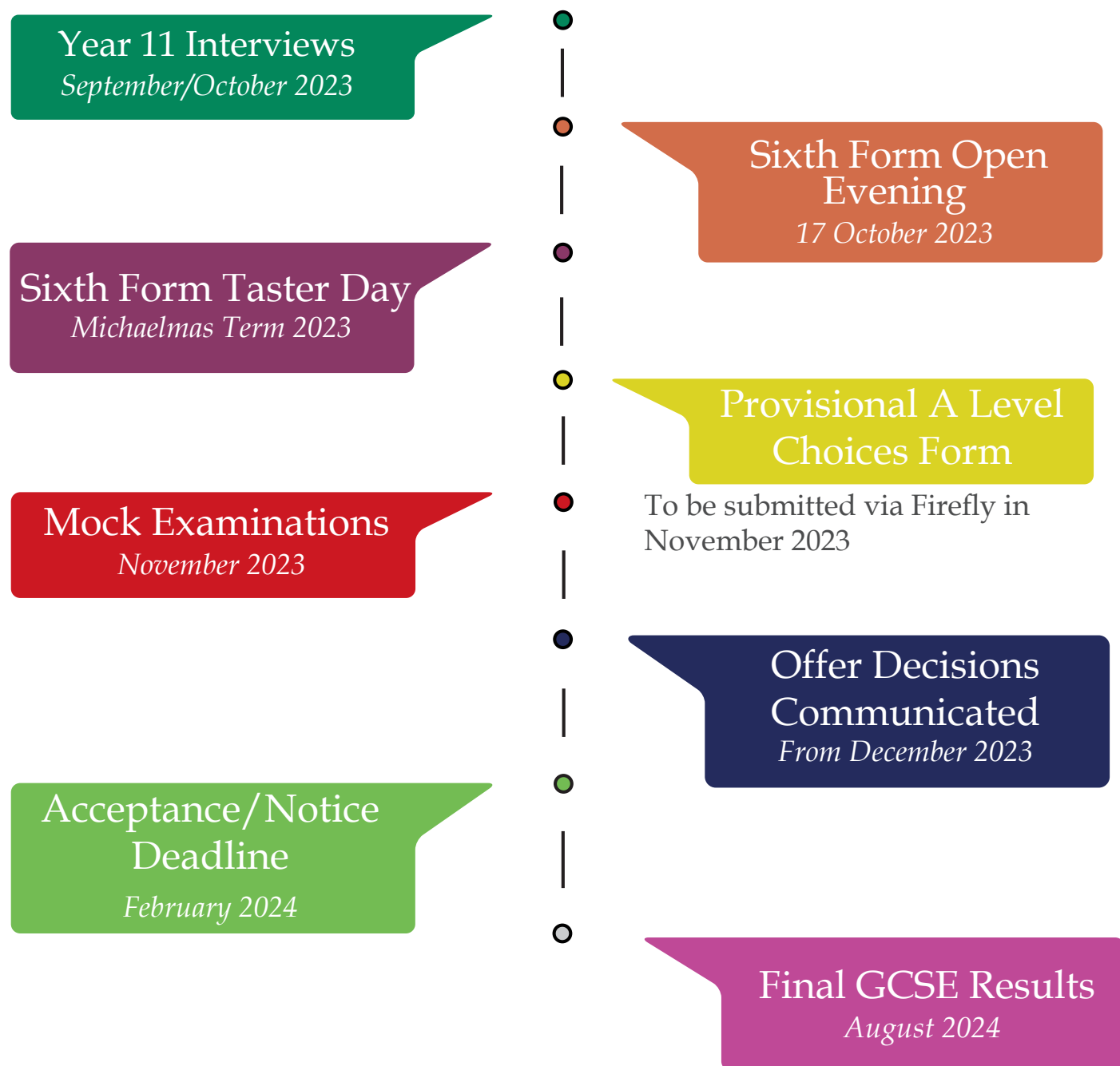
NEW FRIENDS

Whether you have been at New Hall for some time, or are joining in the Sixth Form, boarding will enable you to make new friends and to develop your social skills. Living as part of a community helps integrate you more fully into the life of the School. It also increases your tolerance and versatility.

In the Sixth Form, you are encouraged to take responsibility for yourself and your own actions, within a supportive framework. Boarding in the Sixth Form provides you with an enhanced experience in this respect and, as such, is also excellent preparation for university life.

To see what boarding in Dennett and Campion is really like, please arrange a visit, and in the meantime, please have a look on Instagram: @newhalldennetthouse and @newhallcampionhouse

Year 11 To Sixth Form Transition (Internal Students)



Grade requirements: three 7s and two 6s

Year 11 To Sixth Form Transition (External Students)

Sixth Form Open Evening

17 October 2023

Applications

A personal statement, most recent school report, predicted grades and mock results are required

School Reference Requests

From November 2023

With permission, we request a reference from current schools

Sixth Form Places Offered

From December 2023

Offer decisions will be sent to you with a deadline for acceptance

Sixth Form Induction Day

September 2024

Registration

Completed registration form (registration fee of £100). Please contact the Admissions Department if you have previously registered your child for a place at New Hall

Admissions Interviews

From November 2023

Scholarship Application Deadline

20 November 2023

Forms available from Admissions via admissions@newhallschool.co.uk

Final GCSE Results

August 2024

Grade requirements: three 7s and two 6s, confirmation of results to be provided

Specific Subject Information

Please find below details about the content of each course, the expectations of students taking them, the minimum entry criteria and contact information for the relevant Curriculum Leader.

- For the purpose of minimum entry criteria for A Levels, we consider the following to be **essay-based subjects**: Religious Studies, English Literature, English Language and History.
- Where reference is made in the minimum entry criteria to “**its/their equivalent**”, this refers to alternative qualifications of commensurate value to the GCSE or IGCSE mentioned earlier in the descriptor.

Fine Art	At least Grade 6 in an Art & Design based subject at GCSE Level (or its equivalent). Those who have not studied a suitable GCSE will also be considered based upon a portfolio.
Biology	At least Grade 7 in GCSE Biology or Grade 87 in GCSE Combined Science, and Grade 7 in GCSE Mathematics (or their equivalent).
Business	At least Grade 5 in an essay-based subject at GCSE and Grade 5 in GCSE Mathematics (or their equivalent).
Chemistry	At least Grade 7 in GCSE Chemistry or Grade 87 in GCSE Combined Science, and Grade 7 in GCSE Mathematics (or their equivalent).
Classical Greek	At least Grade 6 in GCSE Classical Greek (or its equivalent).
Computer Science	At least Grade 6 in GCSE Computer Science, and Grade 6 in GCSE Mathematics and an essay-based subject. For those who have not studied GCSE Computer Science, at least Grade 7 in GCSE Mathematics and Grade 6 in an essay-based subject.
Drama and Theatre Studies	At least Grade 6 in GCSE Drama (or its equivalent). For those who have not studied GCSE Drama, a proven interest in theatre and Grade 6 in GCSE English Literature.
DELTA/DELE Language Diplomas	This qualification is available to all students in the New Hall Sixth Form in addition to their A Level subjects.
Economics	At least Grade 6 in an essay-based subject and Grade 6 in GCSE Mathematics (or their equivalent).
English Literature	At least Grade 7 in GCSE English Literature and Grade 7 in GCSE English Language (or their equivalent).
Extended Project Qualification (EPQ)	This qualification is available to all students in the New Hall Sixth Form in addition to their A Level subjects.
French	At least Grade 7 in GCSE French (or its equivalent).
Geography	At least Grade 6 in GCSE Geography (or its equivalent).
History	At least Grade 6 in GCSE History (or its equivalent).
Latin	At least Grade 6 in GCSE Latin (or its equivalent).
Mathematics	At least Grade 7 in GCSE Mathematics (or its equivalent).
Further Mathematics	Grade 9 in GCSE Mathematics (or its equivalent). N.B. To continue the Further Mathematics course into Year 13 students must achieve a minimum of a grade B at the end of Year 12.
Music	At least Grade 6 in GCSE Music and/or Grade 6+ on voice or instrument (or their equivalent). Knowledge of music theory to Grade 5 (or equivalent).

Specific Subject Information

Photography	At least Grade 6 in an Art & Design based subject at GCSE (or its equivalent). Those who have not studied a suitable GCSE will also be considered based upon a portfolio.
Physical Education	At least Grade 6 in GCSE Physical Education (or its equivalent).
Physics	At least Grade 7 in GCSE Physics or Grade 87 in GCSE Combined Science, and Grade 7 in GCSE Mathematics (or their equivalent).
Politics	At least Grade 5 in an essay-based subject at GCSE (or its equivalent).
Psychology	At least Grade 6 in GCSE Biology or Grade 66 in GCSE Combined Science, and Grade 6 in GCSE Mathematics and in an essay-based subject (or their equivalent).
Spanish	At least Grade 7 in GCSE Spanish (or its equivalent).
Theology	At least Grade 7 in GCSE Religious Studies (or its equivalent).

Those subjects highlighted in yellow are *ab initio* subjects – ie. they are taught without the requirement for having studied them before A Level.



Fine Art

Why Choose Fine Art?

Fine Art is by far the most highly subscribed Art and Design based qualification nationally and is a course that welcomes a variety of non-didactic approaches. This is a well-regarded qualification that can form the typical platform to a range of exciting creative pathways. It can also serve as a useful supplementary qualification for the majority of university courses. The staff who deliver the course are experienced moderators who occupy senior roles for the same examination board. Moreover, students' work from New Hall is often used as exemplar work at Edexcel.

You Will Be Expected To...

Address the four main assessment objectives (the same objectives that are used at GCSE level) as follows:

- Develop ideas through sustained investigations, demonstrating critical understanding*
- Explore media, techniques and processes, reviewing and refining ideas*
- Record ideas, observations and insights relevant to intentions*
Present a personal and meaningful response that realises intentions whilst making connections to other visual elements

The above will be conducted in one or all of the following disciplines: painting/drawing, printmaking, sculpture, new media and/or lens based image making.

Course Details

We follow the linear route (the full A Level qualification over two years of study):

*Edexcel: Advanced GCE in Art and Design: Fine Art (9FA0)
Component 1: Personal Investigation (60% of the qualification) – this includes a written study of at least 1000 words
Component 2: Externally Set Assignment (40% of the qualification; this latter component runs from 1 February to early May in Year 13)*

The course especially fosters an independence of mind in developing, refining and communicating one's own ideas, intentions and personal outcomes.

Entry Requirements

6

At least Grade 6 in an Art & Design based subject at GCSE Level (or its equivalent). Those who have not studied a suitable GCSE will also be considered based upon a portfolio.

Courses and Careers

The subject is key for any creative pathway such as advertising, fashion and much more. It can also lead to exciting mainstream pathways in architecture and various forms of design. The subject also complements many other academic routes at university and beyond.

*"It is rare to find an A Level course where such a distinctive personalisation of work emerges."
Natalie Milner (Journalist and Publisher)*

Contact

Name: Mr Gareth Hughes

Email: g.hughes@newhallschool.co.uk



Biology

Why Choose Biology?

Biology is the study of life. Biologists study the function of biological molecules, cells, whole organisms and environments. Biology is an ever-expanding field that offers a large number of opportunities in a wide range of occupations. The skills you will develop whilst studying Biology are highly regarded by employers. If you enjoyed studying Biology at GCSE and wish to study a practical subject and develop your initiative, Biology at A Level may be a good option for you.

You Will Be Expected To...

- *Have a good understanding of Biology to GCSE level*
- *Use mathematical skills confidently and effectively*
- *Use accurate scientific terminology in discussions and written answers*
- *Develop excellent practical skills using a wide variety of equipment, whilst working co-operatively with others*
- *Revise regularly and thoroughly; especially definitions*
- *Read, reflect on and ask questions about Biology articles in quality newspapers/periodicals*

Course Details

Topics studied in Year 1 include; 'Biological molecules', 'Cells', 'Organisms exchange substances with their environment' and 'Genetic information, variation and relationships between organisms'.

Topics studied in Year 2 include; 'Energy transfers in and between organisms', 'Organisms respond to changes in their internal and external environments', 'Genetics, populations, evolution and ecosystems' and 'The control of gene expression'.

Students will complete twelve required practicals throughout the 2 year course. These will be examined in the three written examination papers.

Entry Requirements

7

87

7

At least Grade 7 in GCSE Biology or Grade 87 in GCSE Combined Science, and Grade 7 in GCSE Mathematics (or their equivalent).

Courses and Careers

Biology is a core subject for those who wish to study Medicine, Veterinary Science, Dentistry and Sports Science or pursue biomedical careers.

"Biology is truly a land of unlimited possibilities." Sigmund Freud

Contact

Name: Mrs Rachael Bentley

Email r.bentley@newhallschool.co.uk



Business

Why Choose Business?

There is little doubt about the relevance of Business to real life; business news is all around us. In addition, every student is a consumer and will, one day, be an employee or perhaps an owner of a business of their own. The study of Business will give students a valuable insight into the business world which will add value to them as potential employees. The course's underlying theme is the consideration of business decision-making in businesses of all sizes, from the smallest local retailer to the world's largest multinational organisations.

You Will Be Expected To...

- *Have an enthusiasm for studying business and a knowledge of topical business events*
- *Apply numerical skills to a range of business contexts*
- *Problem solve, make decisions, challenge assumptions and critically analyse*
- *Have the ability to quickly learn and apply subject specific vocabulary*
- *Have the ability to follow complex text and write in a formal and structured way*

Course Details

AQA A Level Business (7132)

The A Level is assessed through three papers, each of which is equally weighted and lasts two hours.

Subject content includes:

- *What is business?*
- *Managers, leaders and decision making*
- *Marketing management*
- *Operational management*
- *Financial management*
- *Human resources management*
- *Analysing the strategic position of a business*
- *Choosing strategic direction*
- *Strategic methods: how to pursue strategies*
- *Managing strategic change*

Entry Requirements

5

5

At least Grade 5 in an essay-based subject at GCSE and Grade 5 in GCSE Mathematics (or their equivalent).

Courses and Careers

There are many university courses on offer that include a direct business element. Careers in management, accounting, economics and marketing are some of the possibilities. Business also leads indirectly to careers in law, journalism, and media in the city.

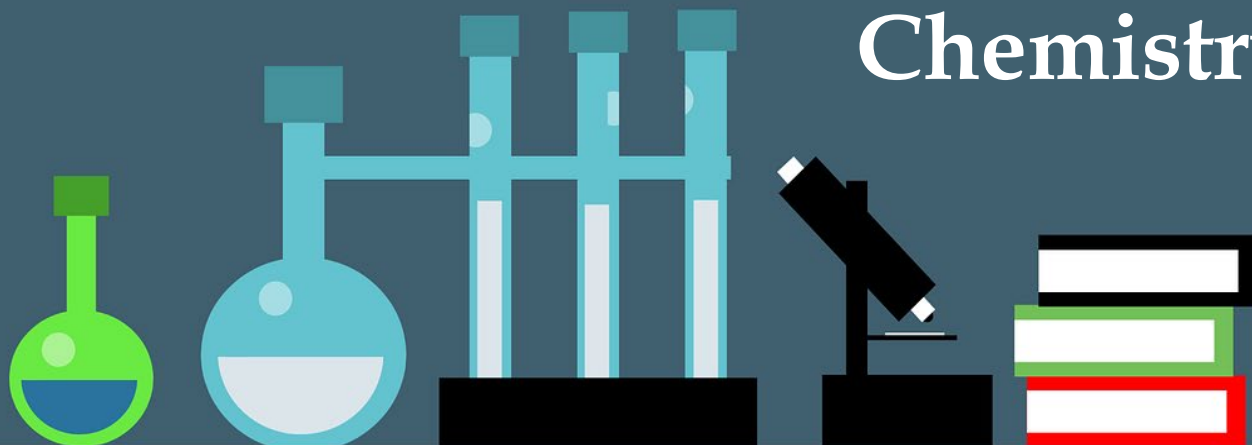
*"A man must take advantage of any opportunity that comes along."
Ray Kroc, Founder, McDonalds*

Contact

Name: Miss Rachael Walters

Email: r.walters@newhallschool.co.uk

Chemistry



Why Choose Chemistry?

A Level Chemistry builds on ideas studied at GCSE but goes much further, revealing some surprising and interesting simplifications taught at GCSE. A challenging yet very rewarding subject, it includes a great deal of practical work which develops a range of useful skills that can be applied well outside the subject discipline. As a result, it is a respected and useful qualification for higher education and employment in a variety of areas. If you want a subject that encourages imagination and logical problem solving, Chemistry is for you.

You Will Be Expected To...

- Use your growing knowledge and understanding of chemical concepts to solve problems, often in a real-life context
- Develop excellent practical skills using a broad range of chemicals and equipment
- Use your mathematical skills to solve problems
- Develop your skills in observing, analysing and evaluating evidence from your own experimental findings
- Most importantly, you already enjoy Chemistry, you enjoy

Course Details

OCR: A Advanced GCE Chemistry (H432)

Year 12

Module 1: Development of Practical Skills.

Module 2: Atomic structure, moles, acid base and redox reactions, structure and bonding.

Module 3: Periodic Table and energy.

Module 4: Core Organic Chemistry and analytical techniques.

Year 13

Module 5: Reaction rates, equilibria, pH and buffers, thermodynamics, redox and electrode potentials, transition metals.

Module 6: Aromatic compounds, carbonyl compounds, carboxylic acids, esters, nitrogen compounds, polymers, organic synthesis, chromatography and spectroscopy (nmr).

Entry Requirements

7
87
7

At least Grade 7 in GCSE Chemistry or Grade 87 in GCSE Combined Science, and Grade 7 in GCSE Mathematics (or their equivalent).

Courses and Careers

Chemistry is essential for degrees in Biochemistry, Material Science, Pharmacy, Medicine, Dentistry, Veterinary Science and Chemical Engineering and Environmental Science.

Academically rigorous, A-Level Chemistry is highly regarded by Admissions Officers on many other courses, such as Accountancy, Economics and Law.

“Every aspect of the world today – even politics and international relations – is affected by chemistry.” Linus Pauling

Contact

Name: Dr Anna Brogden

Email: a.brogden@newhallschool.co.uk



Classical Greek

Why Choose Classical Greek?

Classical Greek is among the world's most fascinating languages. Studying the language used by Sophocles, Socrates, and Pericles means immersion in the literature, philosophy, and politics of a civilisation without which our own would not exist. An ancestor of modern European languages, Classical Greek also affords its students rare insight into the very nature of the languages we speak today. The study of Classical Greek at A Level fosters high-level linguistic and literary analysis, marking out those who pursue it as outstanding and sophisticated thinkers. As the language of the Bible, Classical Greek complements the study of Theology, as well as Latin, English, the Sciences, Politics, and languages.

You Will Be Expected To...

- Review and learn vocabulary and grammar as appropriate
- Develop translation and comprehension skills
- Read and analyse poetry and historical texts
- Write essays in English on the literature studied

The format of the A Level examination is very similar to that of the GCSE. There are Unseen Translation and Comprehension papers, much like the GCSE Language paper, alongside Prose and Verse Literature papers.

Course Details

OCR: Advanced GCE in Classical Greek (H044):

Language: Students will develop their knowledge of Greek vocabulary and linguistic structures through reading and studying texts and stories in Greek (a substantial proportion of grammatical content is covered by the end of Year 11). They will then develop their linguistic competence to translate original texts with stylistic flair.

Literature: Students explore some of the most fascinating, important, and influential literature ever composed. They will read extracts of Greek texts and answer questions in English on the passages they have studied and prepared in lessons. Included in the literature prescription for examination in 2025 are excerpts from Homer's magnificent *Odyssey*, Plato's exploration of the concept of love in his *Symposium*, and the tragic fall of Ajax depicted in Sophocles' eponymous play.

Entry Requirements

6

At least Grade 6 in GCSE Classical Greek (or its equivalent).

Courses and Careers

Classics students are masters of languages, History and English and so studying Classical Greek opens doors. As a department, we offer an Oxbridge Classics Enrichment Programme for those interested in studying Classics at university. Classics students go on to study Law, Medicine, Business and other highly respected graduate programmes.

"[English] fails me utterly when I attempt to describe what I love about Greek." Donna Tartt

Contact

Name: Mr Paul Goulding
Email: p.goulding@newhallschool.co.uk

A photograph of four students in a computer lab. A young woman in the foreground is smiling and looking at a computer monitor. Behind her, a young man is also looking at a monitor. To the right, another young woman is partially visible, and further back, a young man is looking at a monitor. They are all wearing school uniforms. The lab has large windows in the background showing greenery outside.

Computer Science

Why Choose Computer Science?

Computer Science at Advanced GCE provides students with the problem solving skills required in everyday life as well as preparation for degree courses in Computer Science, Mathematics, Software Engineering, GIS, Economics and many other subject areas. The Computer Science job market is one of the most lucrative and fastest expanding area of employment in the UK with jobs that lead into robotics, artificial intelligence, big data processing, ethical hacking, game development or even teaching. It is challenging but rewarding and builds on the work completed at GCSE. The core principles of Computer Science are not new and are based on the work done by many great and famous computational minds. How we may apply these principles is very new, cutting edge and exciting.

You Will Be Expected To...

- Study the fundamentals of programming using languages that might include VB, NET, C# and Python
- Develop computational and algorithmic thinking skills through solving computing puzzles
- Develop an understanding of the powers and limitations of humans and machines by learning their principles of operation
- Explore the consequences of emerging technology and cyber security
- Analyse algorithms to determine its purpose and complexity
- Study the fundamentals of communication and networking
- Gain an understanding of databases and Big Data

Course Details

AQA: Advanced GCE Computer Science (7517)

The course is both theoretical and practical. The assessment is made up of one on-screen exam (40%), one written exam (40%) and a non-exam assessment in the form of a project (20%).

Many of the concepts discussed and taught will be applied in algorithm design and applying these design in a coded solution. There is time spent investigating, researching and gaining a real understanding of number systems, networking technologies, data structures, computer hardware and software and systems architecture. You will discover how a computer computes and what development is required to implement areas including artificial intelligence and modelling.

Entry Requirements

6

6

At least Grade 6 in GCSE Computer Science, and Grade 6 in GCSE Mathematics and an essay-based subject. For those who have not studied GCSE Computer Science, at least Grade 7 in GCSE Mathematics and Grade 6 in an essay-based subject.

Courses and Careers

Computer Science is extremely useful for those looking to go into any field of study. It is preferred by some Engineering, Systems Design, Architecture, Geography and Economics courses. It will support any degree course.

"Sometimes it is the people no one imagines anything of who do the things that no one can imagine." Alan Turing

Contact

Name: Mrs Devina Gillooly

Email: d.gillooly@newhallschool.co.uk



Drama and Theatre Studies

Why Choose Drama and Theatre Studies?

Drama and Theatre A Level inspires and equips students not only to be creative theatre makers but to develop skills needed in many other field – collaboration, evaluation and analysis, creativity, reflection and self-review, presentation skills and confidence. Students, whether onstage performers, backstage crew, designers, directors or technicians are encouraged to explore, imagine and create other worlds, and to understand and develop empathy with other characters.

You Will Be Expected To...

- Participate in the creation, development and performance of a piece of theatre based on a reinterpretation of an extract from a published text.
- Create and develop, perform or design, two pieces of theatre based on a stimulus supplied by the examination board.
- Study two complete texts and an extract from a third. After exploring the plays, practically, students are given the opportunity to demonstrate their knowledge, understanding and skills in interpreting them for performance.
- Attend live theatre performances in order to deepen and broaden knowledge and understanding of dramatic process and to evaluate the work of others.

Course Details

Eduqas A Level in Drama and Theatre (A690QS)

Component 1: Theatre Workshop (20%) Students are assessed on either acting or design and will use the techniques and working methods of an influential theatre practitioner or a recognised theatre company, producing a creative log.

Component 2: - Text in Action (40%) Students are assessed as actors or designers and perform in front of an external, visiting examiner.

Component 3 – Text in Performance, the written examination (40%) Each section relates to a set text - one from pre-1956, one post-1956, and the final text is the award-winning 'The Curious Incident of the Dog in the Night Time'.

Live theatre evaluation is incorporated into the course, including evening theatre trips and residential visits.

Entry Requirements

6

At least Grade 6 in GCSE Drama (or its equivalent). For those who have not studied GCSE Drama, a proven interest in theatre and Grade 6 in GCSE English Literature.

Courses and Careers

For some students, this course will prepare them for professional training and careers in the performing arts. Past students have gone on to train or study performance, media and film production, stage management and design at Guildhall, Italia Conti, ArtsEd, Guildford School of Acting and the Royal Welsh Conservatoire. For all students, it broadens their knowledge of literature, history, politics, media and culture and prepares them for careers in law, journalism, management, marketing, media and communications.

"The actor should be able to create the universe in the palm of his hand." Sir Laurence Olivier

Contact

Name: Mr Andrew Williams

Email: a.williams@newhallschool.co.uk



Economics

Why Choose Economics?

The study of Economics emphasises the importance of economic issues in a modern society and seeks to encourage an understanding of the world in which we live today and the economic forces that shape all our lives. Economics is an excellent subject for developing personal transferable skills such as the skills of analysis, application and evaluation. It is intellectually robust and of contemporary relevance. Employers and higher education value the content, the questioning attitudes and the skills which are acquired through studying Economics.

You Will Be Expected To...

- *Be confident in dealing with numerical data*
- *Have the ability to follow text relating to contemporary economic issues and write in a clear and structured way*
- *Develop an understanding of economic concepts and theories through a critical consideration of current economic issues, problems and institutions that affect everyday life*
- *Develop a critical approach to economic models of enquiry, recognising the limitations of economic models*
- *Have the ability quickly to learn and apply subject specific vocabulary*

Course Details

Edexcel Economics A (9EC0)

The A Level is structured into four themes with three externally assessed examinations.

Theme 1 – Introduction to markets and market failure (inc. government intervention)

Theme 2 – The UK economy – performance and policies (inc. growth, employment, inflation and macroeconomic policy)

Theme 3 – Business behaviour and the labour market (inc. business growth and market structures)

Theme 4 – A global perspective (inc. international economics, economic development and the financial sector)

Entry Requirements

6

At least Grade 6 in an essay-based subject and Grade 6 in GCSE Mathematics (or their equivalent).

6

Courses and Careers

Economics is a subject highly valued amongst employers and universities alike. Average earnings and employment levels for Economics graduates are particularly high. Its study can lead to careers in a broad range of areas such as Banking, Finance, Business, Consultancy, Law and Government Policy. Students intending to pursue a pure Economics degree at university are advised to take A Level Mathematics.

“Economics is (almost) about Life, the Universe and Everything.” Ha Joon Chang

Contact

Name: Mr Gerard Hughes

Email: g.hughes1@newhallschool.co.uk



English Literature

Why Choose English Literature?

English Literature is one of the most valuable A Level subjects, according to information from Oxbridge and the Russell Group universities. This is by virtue of its content: a celebration of all that distinguishes us from “brutish beasts” and the application of critical skills to the study of great writers. This is a subject which combines analysis with sensory delight; reading and going to the theatre are pleasurable activities which form an important part of the intelligent student’s recreation. Why not convert this pleasure into UCAS points?

You Will Be Expected To...

- *Demonstrate detailed critical understanding in analysing the ways in which structure, form and language shape meanings in literary texts, using appropriate terminology and concepts, and coherent, accurate written expression.*
- *Explore connections and comparisons between different literary texts, informed by interpretations of other readers.*
- *Demonstrate understanding of the significance and influence of the contexts in which literary texts are written and received.*

Course Details

OCR Level 3 Advanced GCE in English Literature (H472).

Component 1: Shakespeare, Drama and Poetry pre 1900 (Examination: 60 marks, 2.5 hours, 40% of A Level).

Component 2: Comparative and Contextual Study (Examination: 60 marks, 2.5 hours, 40% of A Level).

Component 3: Coursework (40 marks, 20% of A Level).

Task 1

Students produce a close critical reading of an extract from a chosen text or poem.

Task 2

Students produce an essay which explores contrasts and comparisons between two texts, informed by different interpretations and an understanding of contexts.

Entry Requirements

7

At least Grade 7 in GCSE English Literature and Grade 7 in GCSE English Language (or their equivalent).

7

Courses and Careers

An Advanced Level in English Literature will serve you particularly well if you aspire to a career in law, journalism, politics or the social sciences.

“Reading is to the mind what exercise is to the body.” Joseph Addison

Contact

Name: Mr Nathan Kerr

Email: n.kerr@newhallschool.co.uk



Extended Project Qualification

Why Choose Extended Project Qualification?

The Extended Project Qualification allows students to pursue a genuine enthusiasm and to develop key academic skills to enhance suitability for university study. It should be a hugely enjoyable undertaking for anyone because the possibilities for projects are limitless. The qualification is an ideal way of enhancing a UCAS application and is increasingly "rewarded" by universities in a number of ways by being used as part of the admissions process.

You Will Be Expected To...

- *Make a formal project proposal and develop a project plan*
- *Research using a wide variety of sources and techniques*
- *Either produce a 5,000 written report or develop an artefact (e.g. an artwork, a model, an engineering product, a computer program, a performance, a recording, an experiment, a composition, an event...). The possibilities are endless and we strongly encourage students to choose something they will genuinely enjoy*
- *Deliver an exciting presentation*
- *Document the product and process*

Course Details

AQA: Extended Project Qualification (7993)

This is a research-based qualification, through which students will develop some important academic skills relevant for higher education.

The project is internally assessed and externally moderated.

Candidates must submit a production log, evidence of a presentation and a product. The product may be a written report of approximately 5,000 words or an artefact and a 2,000 essay. In all cases, there is an emphasis on the research process.

Entry Requirements

This qualification is available to all students in New Hall Sixth Form.

Courses and Careers

The project works with any combination of A Levels.

Candidates must avoid "dual accreditation", i.e. work done for an EPQ must be a genuine "extension" of A Level learning.

"It does not take much strength to do things, but it requires a great deal of strength to decide what to do." Elbert Hubbard

Contact

Name: Miss Laura Beatty
Email: l.beatty@newhallschool.co.uk

Why Choose French?

French at Advanced GCE builds a wide repertoire of linguistic and cultural knowledge. Students develop the capacity to communicate fluently and confidently in the target language; they gain insight into culture, history and politics, which equips them for residence in a Francophone country or for university study. French continues to play an integral part in international relations, especially now that Britain has gained its independence from the EU. Linguists are in high demand with their talent for diplomacy, resilience, persistence and open-mindedness. French complements a wide range of other subjects and opens the door to the international job market and prestigious universities.

You Will Be Expected To...

- Spend time reading and watching news and current affairs and acquiring new vocabulary
- Build your knowledge and application of grammar and more sophisticated linguistic structures
- Attend a 30-minute conversation session each week to develop your fluency
- Engage critically with a literary text and a film, developing skills of analysis in written French
- Develop knowledge and understanding of important historical, socio-political and technological aspects of Francophone culture
- Attend our French Society as well as our study trips abroad

Course Details

Edexcel Advanced Level GCE in French (9FR0) Course Content:

1. Changes in French Society: Family, Education, Work
2. Political and Artistic Culture in Francophone Countries: Music, Media, Festivals and Traditions
3. Analytical Study of a film and novel
4. Immigration and the Multicultural French Society
5. The 2nd World War: Occupied France, The Vichy Régime, The Resistance

Examinations:

Paper 1: Listening, Reading, Translation in to English

Paper 2: Translation into French, Analytical essays (film + novel)

Paper 3: Speaking (discussion on a theme, presentation and discussion of independent research project)

Entry Requirements

7

At least Grade 7 in GCSE French (or its equivalent).

Courses and Careers

An A Level qualification in French can be invaluable when applying for any undergraduate course or apprenticeship.

Popular careers: Tourism, Education, International Relations, Politics, Finance, Export, Military, Intelligence, Marketing, International Law.

*“À vaillant coeur rien d'impossible.”
Jacques Cœur*

Contact

Name: Mr David Boudon

Email: d.boudon@newhallschool.co.uk

French DELF | Spanish DELE

Why Choose French DELF/ Spanish DELE?

DELF/DELE is a more practical approach to language learning, designed to help you understand and use French/Spanish in real life situations. Contrary to A Level, DELF and DELE are awarded by the French Ministry of Education and the Instituto Cervantes respectively and are recognised throughout the world. There are four different levels to which students can aim according to their ability and their progress, ranging from A1 (beginner) to B2 (expert). Examinations can be sat at various times during the school year and the course is flexible, exciting and designed to nurture the students' independence and resilience.

You Will Be Expected To...

- Read primary resources regularly such as press titles, novels or any written material which you find of interest.
- Watch films, news and documentaries in French/Spanish as often as feasible to maximise your understanding of spoken French/Spanish.
- Attend speaking lessons with our assistant.
- Endeavour to go abroad and put your skills into practice when opportunities arise (school or family trips).
- Be independent and seek help when needed.
- Develop your understanding of French/Spanish culture and customs.
- Adopt a mature and motivated approach to your learning.

Course Details

This is a summarised description of the levels available:

Level	Listening	Reading	Speaking	Writing
C2	Has no difficulty in understanding any kind of spoken language, delivered at fast native speed	Can understand a wide range of long and complex texts	Has a good command of idiomatic expressions	Can write clear, smoothly flowing, complex texts in a logical structure
C1	Can understand enough to follow complex topics, though he/she may need to confirm details	Can understand in detail lengthy, complex texts, provided he/she can reread difficult sections	Can express him/herself fluently and spontaneously	Can express him/herself with clarity and precision
B2	Idiomatic usage influences the ability to understand	Has a broad active reading vocabulary, but may experience some difficulty with low-frequency idioms	Can interact with a degree of fluency and spontaneity that makes regular interaction	Can express news and views effectively in writing
B1	Can understand the main points of clear standard speech on familiar matters regularly encountered in work, school, leisure	Can read straightforward factual texts on subjects related to his/her field and interest	Can exploit a wide range of simple language to deal with most situations	Can write personal letters and notes asking for or conveying simple information of immediate relevance,
A2	Can understand enough provided speech is clearly and slowly articulated	Can understand short, simple texts containing the highest frequency vocabulary	Can communicate in simple and routine tasks requiring a simple and direct exchange of information	Can write short, simple formulaic notes relating to matters in areas of immediate need
A1	Can follow speech which is very slow and carefully articulated, with long pauses for him/her to assimilate meaning	Can understand very short, simple texts a single phrase at a time, picking up familiar names, words and basic phrases	Can interact in a simple way but communication is totally dependent on repetition at a slower rate of speech	Can ask for or pass on personal details in written form

Assessment

4 components to be sat:

Oral comprehension 25%

Oral production 25%

Written comprehension 25%

Written production 25%

Beyond the Classroom

The main goal you should have for yourself beyond the classroom should be to use French/Spanish in practical situations and to be ready to use it in natural settings. Therefore, what we recommend is that you remember that languages should be used and kept alive.

Discover it, use it and above all, enjoy it!

"Apprendre une autre langue, c'est un peu comme devenir quelqu'un d'autre." Proverbe Japonais.

"Cada idioma es un modo diferente de ver la vida." – "Every language is a different way of seeing life."

Contact

French : Mr D Boudon, d.boudon@newhallschool.co.uk
Spanish: Mrs C Wilson, c.wilson@newhallschool.co.uk

A composite image featuring a globe, a magnifying glass, and a compass resting on a detailed map. The globe is positioned on the right side, showing parts of Asia and Australia. The magnifying glass is on the left, focusing on a specific area of the map. The compass is in the center, with its legs spread. The word 'Geography' is written in a large, white, serif font across the top right of the image.

Geography

Why Choose Geography?

The study of Geography has never been more relevant than it is today. Geography is the integrated study of the earth's places, peoples, environments and societies. At its core is the understanding of the relationships and impacts between people and the environment. It is unique in bridging the social sciences, with its understanding of the dynamics of societies, cultures and behaviour, and the earth sciences, in the understanding of physical landscapes and the dynamics of environmental processes. Geography is a rigorous academic qualification and is one of the 'facilitating subjects' identified by the Russell Group universities.

You Will Be Expected To...

- Develop your knowledge of locations, places, processes and environments
- Become confident and competent in selecting, using and evaluating a range of quantitative and qualitative skills and approaches (including cartographic, statistical, and graphical skills)
- Understand the fundamental role of fieldwork as a tool to understand and generate new knowledge about the world
- Develop as a critical and reflective learner, able to articulate opinions, suggest relevant new ideas and provide evidenced argument in a range of situations

Course Details

Edexcel Advanced GCE in Geography (9GE0)

Three examinations:

Paper 1 (30%): Physical Geography (Tectonic Processes and Hazards, Coastal Landscapes and Change, Water Cycle and Water Insecurity and Carbon Cycle and Energy Insecurity)

Paper 2 (30%): Human Geography (Globalisation, Regenerating Places, Superpowers, Migration, Identity and Sovereignty)

Paper 3 (20%): Synoptic investigation based on geographical issue from core topics covered in Paper 1 and 2.

NEA (20%): One non-examination task of 3000-4000 words. In order to satisfy the requirements of this piece of coursework, students will be required to undertake a programme of fieldwork throughout the course. Additional fees will apply for these trips.

Entry Requirements

6

At least Grade 6 in GCSE Geography (or its equivalent).

Courses and Careers

Geography combines well with a variety of subjects. As a result of its multi-skilled and academic nature, people who study Geography and related subjects at A Level or at university go onto many different types of career.

"Geography is about understanding our world. It illuminates the past, explains the present and prepares us for the future." Michael Palin

Contact

Name: Mr Ben Williams

Email: b.williams@newhallschool.co.uk

History



Why Choose History?

The aim in History is to stimulate a lively, interesting, and well-informed knowledge of the past. Understanding the past develops skills of analysis and debate that are valuable to anyone wishing to seek the truth and think clearly and intelligently. History teaches that there are rarely clear cut or simple answers to questions, encouraging the interrogation of evidence and the formation of considered, independent judgements. It also offers students the opportunity to acquire and improve many of the key skills which have been identified as a priority by universities and employers.

You Will Be Expected To...

- Read widely and critically
- Think independently and develop informed opinions
- Contribute to discussions
- Write detailed essays answering a variety of questions
- Retain large amounts of factual detail to support extended writing
- Use inference and analytical skills to evaluate historical sources
- Comprehend and evaluate the work of other historians
- Carry out independent research

Course Details

Pearson Edexcel Advanced GCE in History (9HI0)

Paper 1: Breadth Study with interpretations

1F: In Search of The American Dream: The USA, c1917-96

Paper 2: Depth Study

2F.2: South Africa, 1948-94: From Apartheid State to 'Rainbow Nation'.

Paper 3: Themes in Breadth with Aspects in Depth

35.1: Britain: Losing and Gaining an Empire, 1763 – 1914

Paper 4: Coursework

World History: An independently researched enquiry on any period of world history.

Entry Requirements

6

At least a Grade 6 in GCSE History (or its equivalent).

Courses and Careers

History A Level is identified by the Russell Group universities and Cambridge University as a subject that leaves open a wide range of options for university study.

History is a subject that combines well with a number of other subjects, particularly other Humanities and Social Sciences.

"The study of History is the beginning of wisdom." Jean Bodin

Contact

Name: Mrs Sarah Garside

Email: s.garside@newhallschool.co.uk

Why Choose Latin?

After covering most of the necessary grammar at GCSE, choosing Latin at A Level presents the unique opportunity to explore Rome and the original texts that have fascinated scholars and readers alike for millennia: from admiration of Ovid's love poetry to investigation of Cicero's legal and political speeches, from embarking upon Virgil's epic Aeneid to engrossing oneself in Tacitus' Roman history. The study of the Latin language provides excellent training in logical and analytical thought, while immersion in the Roman world connects students to their historical, social, and literary heritage, fostering a deeper understanding of our own culture and society. Latin works particularly well with Theology and Classical Greek, but also History, English, the Sciences, Politics, Drama and Modern Languages.

You Will Be Expected To...

- Review and learn vocabulary and grammar as appropriate
- Develop translation and comprehension skills
- Read and analyse poetry and political/historical texts
- Write essays in English on the prose and verse texts

The format of the A Level examination is very similar to that of the GCSE. There are Unseen Translation and Comprehension papers, much like the GCSE Language paper, and Prose and Verse Literature papers.

Course Details

OCR: Advanced GCE in Latin (H443):

Language: Students will develop their knowledge of Latin vocabulary and linguistic structures through reading and studying texts and stories in Latin (a substantial proportion of the necessary grammatical content has already been covered by the end of Year 11). They will learn not only to translate original texts with stylistic flair, but also to render English prose in precise and sophisticated Latin.

Literature: Students explore some of the most fascinating, important, and influential literature ever composed. They will read extracts of Latin texts and answer questions in English on the passages they have studied and prepared in lessons. Included in the literature prescription for examination in 2024 are the epic conclusion of Virgil's Aeneid and the poems of Catullus, amusing and heart-breaking in equal measure.

Entry Requirements

6

At least Grade 6 in GCSE Latin (or its equivalent).

Courses and Careers

Classics students are masters of languages, History and English and so studying Latin opens doors. As a department we offer an Oxbridge Classics Enrichment Programme for those interested in reading Classics at university.

Classics students go on to study Law, Medicine, Business and other highly respected graduate programmes.

"Exegi monumentum aere perennius." (I have wrought a monument longer-lasting than bronze) – Horace, on the legacy of his own poetry.

Contact

Name: Mr Paul Goulding

Email: p.goulding@newhallschool.co.uk

Mathematics and Further Mathematics

Why Choose Mathematics and Further Mathematics?

Mathematics at A Level is a course worth studying not only as a supporting subject for the physical and social sciences, but in its own right. It is challenging but interesting. It builds on work at GCSE, but also involves new ideas produced by some of the greatest minds in history.

You Will Be Expected To...

- Understand mathematics and mathematical processes in a way that promotes confidence, fosters enjoyment and provides a strong foundation for progress to further study
- Reason logically and recognise incorrect reasoning
- Generalise mathematically and construct mathematical proofs
- Use mathematical skills and techniques to solve challenging problems which require you to decide on the solution strategy
- Represent situations mathematically and understand the relationship between problems in context and mathematical models that may be applied to solve them

Course Details

Edexcel: Advanced GCE in Mathematics (9MA0) Paper 1 :
Pure Mathematics 1

Paper 2 : Pure Mathematics 2

Paper 3 : Statistics and Mechanics

Edexcel Advanced GCE in Further Mathematics (9FM0)

Paper 1 : Core Pure Mathematics 1

Paper 2 : Core Pure Mathematics 2

Paper 3 : Further Statistics

Paper 4 : Further Mathematics

Students are required to have a calculator for all examinations. The preferred model is: CASIO fx-991EX

Entry Requirements

7

Mathematics: At least Grade 7 in GCSE Mathematics (or its equivalent).

9

Further Mathematics: Grade 9 in GCSE Mathematics (or its equivalent).

Courses and Careers

This subject is vital for those looking to go into the field of engineering.

It is preferred for some Architecture courses and some Economics courses.

"Do not worry about your difficulties in mathematics. I can assure you mine are still greater." Albert Einstein

Contact

Name: Mr Ian Tanner

Email: i.tanner@newhallschool.co.uk

Why Choose Music?

You will consider A Level Music if you are passionate about listening to, creating and performing music. This course encourages students to extend the breadth of their musical experiences in all musical genres and to consider the historical, social and cultural context of the music that they study and create.

You Will Be Expected To...

- *Appraise Music: There will be listening, analysis and contextual understanding questions.*
- *Perform: Performance of a minimum of 6 or 10 minutes' music assessed by a visiting examiner, giving a much more realistic scenario than a recording.*
- *Compose: One composition will be in response to a chosen brief and will be written in a Western Classical Style. Other compositions will be linked to an area of study or free composition. You are required to produce 2 or 3 pieces totalling 4 or 8 minutes. Your portfolio will be submitted for external marking.*

Course Details

Eduqas Music A660QS

Component 1: Appraising Music. You will be assessed on music from a number of genres. 40% of the marks

For components 2 and 3, students may choose the weighting of the marks based on their own skills:

Component 2: Performance. You will be required to perform as a soloist or in ensemble. 35% OR 25% of the marks

Component 3: Composition. You will be required to produce a portfolio of two or three compositions. 25% OR 35% of the marks.

Entry Requirements

6

At least Grade 6 in GCSE Music and/or Grade 6+ on voice or instrument (or their equivalent). Knowledge of music theory to Grade 5 (or equivalent).

Courses and Careers

A small number of A Level Music students will go on to study the subject either at university or at conservatoire. A far greater number of students go on to study other subjects including medicine, natural sciences, theology, law and engineering.

"There are many ways to play a piece of music, as long as you never play it safe."

Contact

Name: Mr Jonathan Turner
Email: j.turner@newhallschool.co.uk



Photography

Why Choose Photography?

Photography is a well subscribed Art and Design based qualification nationally. Such a course can be studied along- side Fine Art or alongside any other academic subjects. Akin to Fine Art, this qualification provides a recognised benchmark of academic ability for employers. The staff who deliver this course are experience moderators who occupy senior roles for the same examination board. Moreover, students' work from New Hall is often used as exemplar work at Edexcel.

You Will Be Expected To...

Address the four main assessment objectives (the same objectives that are used at GCSE level) as follows:

- Develop ideas through sustained investigations, demonstrating critical understanding
- Explore media, techniques and processes, reviewing and refining ideas
- Record ideas, observations and insights relevant to intentions
- Present a personal and meaningful response that realises intentions whilst making connections to other visual elements

The above will be conducted in one or all of the following disciplines: film-based photography, digital photography and/ or film and video.

Course Details

Edexcel: Advanced GCE in Art and Design: Photography (9PY0) Component 1: Personal Investigation (60% of the qualification) – this includes a written study of at least 1000 words

Component 2: Externally Set Assignment (40% of the qualification; this latter component runs from 1 February to early May in Year 13)

Students are encouraged to consider the application and implications of new and emerging technologies that can be used in conjunction with traditional and digital photography materials.

Entry Requirements

6

At least Grade 6 in an Art & Design based subject at GCSE (or its equivalent). Those who have not studied a suitable GCSE will also be considered based upon a portfolio.

Courses and Careers

The subject proves useful for any creative pathway such as film and animation. The subject also complements a number of other academic routes at university and beyond.

"You don't take a photograph. You make it."
Ansel Adams

Contact

Name: Mr Gareth Hughes

Email: g.hughes@newhallschool.co.uk



Physical Education

Why Choose Physical Education?

Physical Education at Advanced GCE is a very interesting and challenging course which complements not only a host of other subjects such as science, sociology and psychology, but is a fantastic study in its own right. It builds on work from GCSE but also explores a host of other subject matter including current affairs in sport.

You Will Be Expected To...

- *Study the three main theoretical areas of Anatomy and Physiology, Psychology and Sociocultural Studies.*
- *Develop your talent in one practical sport over the two years.*
- *Improve your ability to observe and analyse a practical performance in terms of skills, tactics and fitness and give a verbal presentation applying theoretical components from the course throughout.*

Course Details

OCR: Advanced GCE in Physical Education H555. A Level Content Overview:

Physiological factors affecting performance - 2hr paper 30%
Psychological factors affecting performance - 1hr paper 20%
Socio-Cultural issues in Physical Activity - 1hr paper 20%
Performance in Physical Education - 30%
Evaluation and Analysis of Performance for Improvement (EAPI)

Entry Requirements

6

At least a Grade 6 in GCSE Physical Education (or its equivalent). A high level of performance in one sport (school A squad minimum or equivalent) is required.

Courses and Careers

This subject is vital for those going into the field of sports science, physiotherapy, PE teaching or indeed any sports related degree, further study or employment.

"Physical Fitness is not only one of the most important keys to a healthy body. It is the basis of creative intellectual activity." John F Kennedy

Contact

Name: Mr Daniel Bacon
Email: d.bacon@newhallschool.co.uk

BTEC Sport

Why Choose BTEC Sport?

Sport is an ever-developing subject area and the BTEC Diploma allows students to explore the full breadth of this field, whilst also developing employability skills. The course is all about learning by doing and putting what is learned into practice straight away. This vocational course is equivalent to two A Level subjects and students are assessed throughout the course rather than solely through terminal examinations. BTEC Sport students should select this option alongside one A Level choice.

You Will Be Expected To...

- Have enthusiasm for all things Sport-related
- Have the organisation to meet deadlines
- Learn inside and outside of the classroom, getting to grips with the theory behind Sport as well as applying this through playing and coaching
- Be confident communicating to others and in using initiative to solve problems

Course Details

Pearson: BTEC Level 3 National Diploma in Sport (603/0460/1)

Mandatory Units:

- Anatomy and Physiology
- Fitness Training and Programming for Health, Sport and Wellbeing
- Professional Development in the Sports Industry
- Sports Leadership
- Investigating Business in Sport and the Active Leisure Industry
- Skill Acquisition in Sport

Students will also cover three optional units.

The course is worth the following UCAS points:

Grade	UCAS Points	A Level equiv.
D*D*	112	A*A*
DD	96	AA
MM	64	CC

Entry Requirements

5

At least a grade 5 in an essay-based subject at GCSE (or its equivalent).

A strong level of performance in at least one sport (School A squad or equivalent) is beneficial, although not mandatory.

Courses and Careers

BTEC Sport provides the perfect platform for further study or work within Sport and facilitates entry to any Sports Science, Physiotherapy or Sport-related degree. The Diploma course can also facilitate entry to a wide range of other courses due to its focus on employability and developing wider skills.

““Excellence is the gradual result of always striving to do better” Pat Riley, three-time NBA Coach of the Year

Contact

Name: Mr Daniel Bacon

Email: d.bacon@newhallschool.co.uk



Physics

Why Choose Physics?

Physics helps us to understand how the world around us works, from can openers, tsunamis and light bulbs to quarks, DNA and black holes. It is the basis for modern technology, and for the instruments used in scientific, engineering and medical research. Studying A Level Physics will develop your problem solving, analytical, mathematical, practical and communication skills which are valued by employers and universities alike, and which will benefit you for a lifetime.

You Will Be Expected To...

- Apply your knowledge of the key concepts to solve problems in a range of different contexts and applications
- Solve problems by using scientific arguments and logic
- Simplify real-life situations so that you can show what is happening and what might happen in different circumstances
- Use your knowledge to solve problems that are given to you in a real-life context
- Investigate the concepts studied with a range of practical experiments

Course Details

OCR: Advanced GCE in Physics A (H556) Course Structure:

Module 1 – Development of practical skills in physics

Module 2 – Foundations of physics

Module 3 – Forces and motion

Module 4 – Electrons, waves and photons

Module 5 – Newtonian world and astrophysics

Module 6 – Particles and medical physics

Examinations taken:-

Modelling Physics - Modules 1, 2, 3 and 5

Exploring Physics - Modules 1, 2, 4 and 6

Unifying Physics - All topics

Entry Requirements

7

87

7

At least Grade 7 in GCSE Physics or Grade 87 in GCSE Combined Science, and Grade 7 in GCSE Mathematics (or their equivalent).

Courses and Careers

The examination board strongly recommends that A Level Mathematics is taken with A Level Physics.

This subject is vital for those looking to go into the field of engineering.

"The laws of physics is the canvas God laid down on which to paint his masterpiece." Dan Brown

Contact

Name: Mr Terence Britton

Email: t.britton@newhallschool.co.uk



Why Choose Politics?

Everyone should study Politics; an A Level in Politics is highly prized by employers and universities. Knowledge of how the political system of a country operates and the philosophies that have shaped it are an indispensable part of the general education of anyone, not least since it enables people properly to fulfil their roles as citizens. For the Greek philosopher Aristotle, politics was the 'master science': that is, nothing less than the activity through which people try to improve their lives and create a 'good society'.

You Will Be Expected To...

What makes Politics different as an academic subject is its emphasis on debate, discussion and argument. If politics exists because people disagree, studying Politics must mean studying how, why and when people disagree and taking an interest in these disagreements.

Politics is therefore particularly likely to suit students who:

- have an interest in the world around them, who want to know more about the society they live in, how it works and how it could work*
- enjoy debate, discussion and argument, those who are comfortable with the fact that in politics there are no simple 'rights' or 'wrongs'*
- like to think for themselves, those who want to develop their own views, rather than accept the views of others.*

Course Details

Pearson Edexcel GCE Politics

- 1. UK Politics: Democracy and Participation; Political parties; Electoral systems; Voting Behaviour and the Media*
- 2. UK Government: The Constitution; Parliament; Prime Minister and Executive; Relationships Between the Branches.*
- 3. Political Ideas: Liberalism; Conservatism; Socialism; Feminism.*
- 4. Government and Politics of the USA: The US Constitution and Federalism; US Congress; US Presidency; US Supreme Court and US Civil Rights; US Democracy and Participation; Comparative Theories.*

Entry Requirements

5

At least Grade 5 in an essay-based subject at GCSE (or its equivalent).

Courses and Careers

Politics is highly valued by universities and employers and lays the foundations for further study of Government and Politics, Law, Economics and Philosophy. The subject develops employability skills suitable for management roles, financial careers and a career in government.

"Politics encircles us today like the coil of a snake from which one cannot get out." Mahatma Gandhi

Contact

Name: Mr Andrew Bowman

Email: a.bowman@newhallschool.co.uk

Psychology



Why Choose Psychology?

Psychology is an exciting, ever developing subject that involves the systematic study of the brain, behaviour and mental processes. Psychological research proceeds in accordance with the rules of science and this is reflected in the new A Level curriculum. It is a multifaceted discipline with multiple areas of research, e.g. Neuroscience, learning theories, social psychology and cognition. Psychology has been crucial in understanding human behaviour during important events such as the holocaust, to mental health during the COVID-19 pandemic more recently. Studying Psychology will provide you with a deeper understanding of not only society's behaviour but also your own!

You Will Be Expected To...

- *Be interested in the relationship between the brain, mind and behaviour. Therefore, keeping abreast of current affairs is important in the application of the subject in real world settings*
- *Design and conduct your own research. You will then need to analyse and interpret the data produced*
- *Utilise critical thinking and evaluative skills to compare different explanations of human behaviour within the course*
- *Use numeracy, research, technological literacy, essay writing and communication skills within both classwork and examinations*
- *Demonstrate knowledge, understanding and evaluation of different methods of research*

Course Details

Edexcel Advanced GCE in Psychology (9PS0)

Paper 1: Foundations in Psychology (Social Psychology, Cognitive

Psychology, Biological Psychology, Learning Theories, Research Methods, Issues and Debates);

Paper 2: Applications of Psychology

Clinical Psychology- e.g. diagnosis, explanations and treatment of mental disorders

Criminological Psychology- e.g. definition and causes of crime and antisocial behaviour; offender interview techniques; identification and treatment of offenders

Paper 3: Psychological Skills

Research Methodology; Synoptic Review of course content; Issues and debates in Psychology

Entry Requirements

6

At least Grade 6 in GCSE Biology or Grade 66 in GCSE Combined Science, and Grade 6 in GCSE Mathematics and in an essay-based subject (or their equivalent).

6

Courses and Careers

Psychology is a valuable subject for anyone pursuing a career that involves working with people, such as medicine, law, business, teaching- in fact, most careers.

"In real life, as well as in experiments, people can come to believe things that never really happened." Elizabeth Loftus

Contact

Name: Mrs Charlotte Milan-Vega

Email: c.milanvega@newhallschool.co.uk



Spanish

Why Choose Spanish?

Spanish at Advanced GCE builds a wide repertoire of linguistic and cultural knowledge. Students develop the capacity to communicate fluently and confidently in the target language; they gain insight into the culture, history and politics, which equips them for residence in a Hispanic country or for university study. With 472 million native speakers and over 21 million students of the language worldwide, Spanish plays a key role in international relations; at a time when Britain is negotiating independence from the EU, linguists are in high demand with their talent for diplomacy, resilience, persistence and open-mindedness. Spanish accompanies a wide range of other subjects and opens the doors to the global marketplace.

You Will Be Expected To...

- Spend time reading and watching news and current affairs and studying new vocabulary*
- Build your knowledge and application of grammar and more sophisticated structures*
- Attend a 30 minute conversation session each week to develop your fluency*
- Engage critically with a literary text and a film, developing skills of analysis in written Spanish*
- Develop knowledge and understanding of important historical, socio-political and technological aspects of Hispanophone culture*
- Go the extra mile in accessing the language independently*

Course Details

Edexcel Advanced Level GCE in Spanish (9SP0) Course Content:

- Changes in Spanish Society: Family, Work, Tourism*
- Hispanic Culture: Music, Media, Traditions*
- Analytical Study of a film and novel*
- Immigration: Benefits, Challenges, Reactions*
- Spanish Civil War, Franco's Dictatorship and the transition to Democracy*

Examinations:

Paper 1: Listening, Reading, Translation in to English

Paper 2: Translation into Spanish, Analytical essays (film+novel)

Paper 3: Speaking (discussion on a theme, presentation and discussion of independent research project)

Entry Requirements

7

At least Grade 7 in GCSE Spanish (or its equivalent).

Courses and Careers

An A Level qualification in Spanish can be invaluable when applying for any undergraduate course or apprenticeship.

Popular careers: Tourism, Education, International Relations, Politics, Finance, Export, Military, Intelligence, Marketing.

"One language sets you in a corridor for life. Two languages open every door along the way."
Frank Smith

Contact

Name: Mrs Catherine Wilson

Email: c.wilson@newhallschool.co.uk



Theology

Why Choose Theology?

Theology is a fascinating subject that explores some of the most profound questions about human existence. At New Hall, Theology is a very popular option at A Level because the subject is delivered in an engaging, thought-provoking way and the Department's results are outstanding. A Level Religious Studies builds upon the skills and knowledge acquired at GCSE, but develops them further by engaging with important theological, moral and philosophical questions.

You Will Be Expected To...

- *Demonstrate an ability to analyse texts, critically engage with a diverse range of scholarly views and formulate your own theological arguments*
- *Recognise the importance of religion in today's world and explore crucial questions in relation to beliefs, values and morality*
- *Express your understanding of Theology through extended essay writing, participation in discussion groups and by extensive wider reading and research*
- *Develop a range of skills that are useful across so many subjects and for life beyond A Levels, including critical analysis, evaluation, exploring contexts, conceptual development and abstract thinking*

Course Details

WJEC Eduqas: Advanced GCE in Religious Studies (601/8700/1)

Component 1: A Study of Religion (Christianity)

There will be four themes within this component: religious figures and sacred texts; religious concepts and religious life; significant social and historical developments in religious thought; religious practices and religious identity.

Component 2: Philosophy of Religion

There will be four themes within this component: arguments for the existence of God; challenges to religious belief; religious experience; religious language.

Component 3: Religion and Ethics

There will be four themes within this component: ethical thought; deontological ethics; teleological ethics; determinism and free will.

Entry Requirements

7

At least Grade 7 in GCSE Religious Studies (or its equivalent).

Courses and Careers

Theology can enable you to go on to study degrees in a variety of humanities subjects, including Sociology, Philosophy, Psychology and English, and work in various fields including law, medicine, teaching, journalism, business and politics.

"Theology is that discipline whereby we stop talking nonsense about God." Herbert McCabe

Contact

Name: Miss Maria Webb

Email: m.webb@newhallschool.co.uk

Undergraduate Degree Courses - Subject Specific Requirements

	A Level	Work Experience
Accountancy	Mathematics (some)	
Archaeology	History (some)	
Architecture	Ideally a mixture of art, design and sciences *	Yes
Art	A Foundation course in Art and Design is not necessarily required for subsequent access onto Art and Design related courses at university owing to the nature and breadth of the A Level Art course offered at New Hall	
Biology	Biology and Chemistry important	
Business	Mathematics (some)	
Chemistry	Chemistry + 1 science	
Classics	Latin or Classical Greek (there are some Classical Studies/ Civilisation courses which do not require prior language knowledge)	
Computer Science	A Level Mathematics + Computer Science	
Dentistry	Chemistry + 1 science (usually Biology)	Yes
Drama	English, Drama, Theatre Studies preferred	
Economics	Economics + Mathematics (some)	
Engineering	Mathematics and/or Physics + 1 science	
English	English	
French	French + 1 language (some)	
Geography	Geography	
History of Art	History preferred (some)	
History	History + modern or ancient language (some)	
Law	Any	Yes
Mathematics	Mathematics and Further Mathematics (some)	
Medicine	A Level Biology and Chemistry (for many) GCSE Science Double/Triple Award	Yes
Physics	Physics and Mathematics (most)	
Physiotherapy	1 or 2 sciences	Yes
Psychology	1 science	
Veterinary Science	Chemistry/Biology (very university specific) GCSE Science Double/Triple award	Yes (6 weeks)

*Many subjects studied at school are relevant to Architecture, giving you the flexibility to choose the subjects you are strongest in and enjoy. Ideally, you should have gained a broad secondary education encompassing a mixture of art, design and sciences. It is important to note that Architecture degree courses do vary to some extent at different universities (e.g. some are more engineering-based, others more design-based), which mean that subject choices for entry onto courses can vary. Therefore, it is not always necessary to study Art, although an enjoyment of drawing freehand and an interest in design is often desirable; most Architecture courses will require you to present a portfolio at interview. Mathematics at A Level is also preferred.

Careers & Higher Education Preparation

Life in the Sixth Form, from the very first day, focuses on preparation for your future career, either:

- straight after A Levels
- via a course in Higher Education, or
- employment on an apprenticeship

In preparing you for your place in the working world, the Sixth Form offers you opportunities to develop and to give expression to various talents and aspects of your personality, to discover your strengths and to demonstrate them in the School community.

For many students, work experience reveals competencies of which they were unaware. They can build on these and increase their self-awareness so that they may feel confident in 'promoting themselves' when completing application forms and attending interviews. Work shadowing will also help with this.

Your responsibilities are:

- To give your best to your academic work, and use your study time wisely, in order to achieve your personal best A Level results, and to give yourself a head start in an increasingly competitive world
- To seize every opportunity to make maximum use of non-lesson time, by involving yourself in School activities, thereby developing your wider capabilities
- To carry out thorough research into opportunities available during and after A Levels and to match them carefully with your personal preferences, academic ability and personal strengths
- To make good use of tutorial time to speak to your Tutor and colleagues, in order to help you towards a realistic self-assessment

The careers programme is comprised of a number of elements designed to help prepare you for life after New Hall. These include:

- Expert, personalised advice on careers, overseen by the Head of Careers and Alumni, Mrs J Hilliker
- Careers seminars from various professionals and the Careers Convention
- Support with work experience
- Support from your tutor & teaching staff
- Exploration of Higher Education opportunities, including visits to higher education institutions, the UCAS Discovery Exhibition, and visit from guest speakers
- Access to Unifrog System to enable independent research into career and higher education options
- UCAS Preparation Programme including personal statements
- The Oxbridge Programme
- Interview practice
- Support with apprenticeship and job applications

Applying For Higher Education Courses

A separate guide for this will be issued to you midway through Year 12. An information evening for you and your parents/guardians will also be held to discuss the key elements of making a successful application and the decisions that need to be made in choosing appropriate courses and institutions.

In June of Year 12, there will be a range of activities and events arranged to help prepare you to make a good application, including opportunities to meet and hear from Admissions Officers from leading universities. There will also be sessions on finance, personal statement writing, course research, use and manipulation of the UCAS website and interview skills.

OXBRIDGE

There is a specialist Oxbridge preparation programme at New Hall, led by Mr P Goulding, Head of Classics (p.goulding@newhallschool.co.uk). Weekly meetings of the Oxbridge Society are held for all Oxbridge applicants in the Sixth Form to help them prepare their applications and to build the skills needed to optimise their interview technique. Applicants also have regular meetings with subject specialists to develop their subject knowledge, research, skills, and their communication of each, all in addition to preparation for their admissions tests (where applicable).

Competition for places at Oxbridge is fierce, so only students with a very strong academic record should apply. In order to make a realistic application, you should meet the following criteria:

- A very strong GCSE profile: (most successful candidates will have at least seven 8+ or equivalent grades)
- Predicted A Level results that, at a minimum, match the grades required for the relevant Oxford or Cambridge course
- A passionate commitment to the chosen subject. Additional and broad reading around the subject will be assumed and tested.

By the end of Year 12, you should be undertaking the Extended Project Qualification.

You must be prepared to undertake the extra work and preparation provided by your supervisor, and to use your summer holiday to strengthen your application. You will also need to attend the relevant Open Days. At the start of Year 13, weekly meetings with your supervisors, and meetings of the Oxbridge Society, will help you to complete your application. Students will participate in a rigorous mock interview programme that will take place before the Oxbridge interview in early December.

New Hall's Oxbridge preparation has a very good track record of success. In previous years, we have been delighted to celebrate places confirmed at Oxford and Cambridge, for an impressive range of subjects:

- | | |
|--|--|
| • Architecture - Darwin College, Cambridge | • Law - Emmanuel College, Cambridge |
| • Biochemistry - Hertford College, Oxford | • Mathematics - St Peter's College, Oxford |
| • Biological Sciences - St Catherine's College, Oxford | • Medicine - St John's College, Cambridge |
| • Classics - Newnham College, Cambridge | • Medicine - Robinson College, Cambridge |
| • Classics - Regent's College, Oxford | • Music - St Peter's College, Oxford |
| • Economics with Finance - Gonville & Caius, Cambridge | • PPE- Christ Church, Oxford |
| • Engineering - Jesus College, Cambridge | • Spanish with Russian - Churchill College, Cambridge |
| • English - Newnham College, Cambridge | • Theology & Religion - Mansfield College, Oxford |
| • French & Spanish - Clare College, Cambridge | • Theology & Religion - Keble College, Oxford |
| • History - Trinity College, Cambridge | • Theology, Religion & Philosophy of Religion, Gonville & Caius College, Cambridge |
| • History - Exeter College, Oxford | • Veterinary Medicine - Girton College, Cambridge |
| • History & Politics - Trinity College, Cambridge | |
| • HSPS - Fitzwilliam College, Cambridge | |
| • Law - Magdalen College, Oxford | |

University Admissions Tests

A number of undergraduate degree courses now require students to sit tests prior to selection for interview, in addition to submitting a UCAS form. The number of courses requiring tests has increased significantly this year and each university will put details of pre-interview tests on their website under the course information. Most tests can be administered by and taken at New Hall, usually around the beginning of November.

The following tests are available:

TEST CODE	UNIVERSITY	SUBJECT
AMESAA	Cambridge	Asian & Middle Eastern Studies
ASNCAA	Cambridge	Anglo Saxon, Norse & Celtic Studies
BMAT	Various	Medicine, Veterinary Medicine, Dentistry
CAT	Oxford	Classics
ECAA	Cambridge	Economics
ELAT	Oxford/Cambridge	English
ENGAA	Cambridge	Engineering, Chemical Engineering
GAA	Cambridge	Geography
HAA	Cambridge	History, History & Politics, History & Modern Languages
HAT	Oxford	History
HSPSAA	Cambridge	Human, Social & Political Sciences
MAT	Oxford/ICL	Mathematics, Computer Science (Oxford)
MLAT	Oxford	Modern Languages, Linguistics
NSAA	Cambridge	Natural Sciences, Chemical Engineering
OLAT	Oxford	Middle Eastern Languages
PAT	Oxford	Physics, Material Sciences, Engineering
PBSAA	Cambridge	Psychological & Behavioural Studies
PHIL	Oxford	Philosophy & Theology (joint honours)
TAA	Cambridge	Theology, Religion & Philosophy of Religion
TMUA	Durham/Lancaster	Mathematics
TSA	Oxford	A range of courses
TSAC	Oxford	Chemistry, History and Economics

Whilst the above list is intended as a guide, you should check individual university specifications for the precise requirements.

In addition to this, we offer the Sixth Term Examination Papers in Mathematics (STEP) designed to test candidates on questions that are similar in style to those encountered on undergraduate Mathematics. Support and guidance to help prepare you for these tests, where appropriate, will be provided from the Trinity Term of Year 12.

RUSSELL GROUP UNIVERSITIES

Given New Hall students are academically able and will typically achieve A*-B grades at A Level, students are encouraged to apply to the top universities, many of whom are part of the Russell Group. These are: Birmingham, Bristol, Cambridge, Cardiff, Durham, Edinburgh, Exeter, Glasgow, Imperial CL, King's CL, Leeds, Liverpool, LSE, Manchester, Newcastle, Nottingham, Oxford, Queen Mary London, Queen's Belfast, Sheffield, Southampton, UCL, Warwick and York. However, students should also research their chosen courses with care, mindful that the best and most appropriate courses for them may be delivered by universities or colleges outside the Russell Group.

